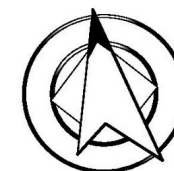
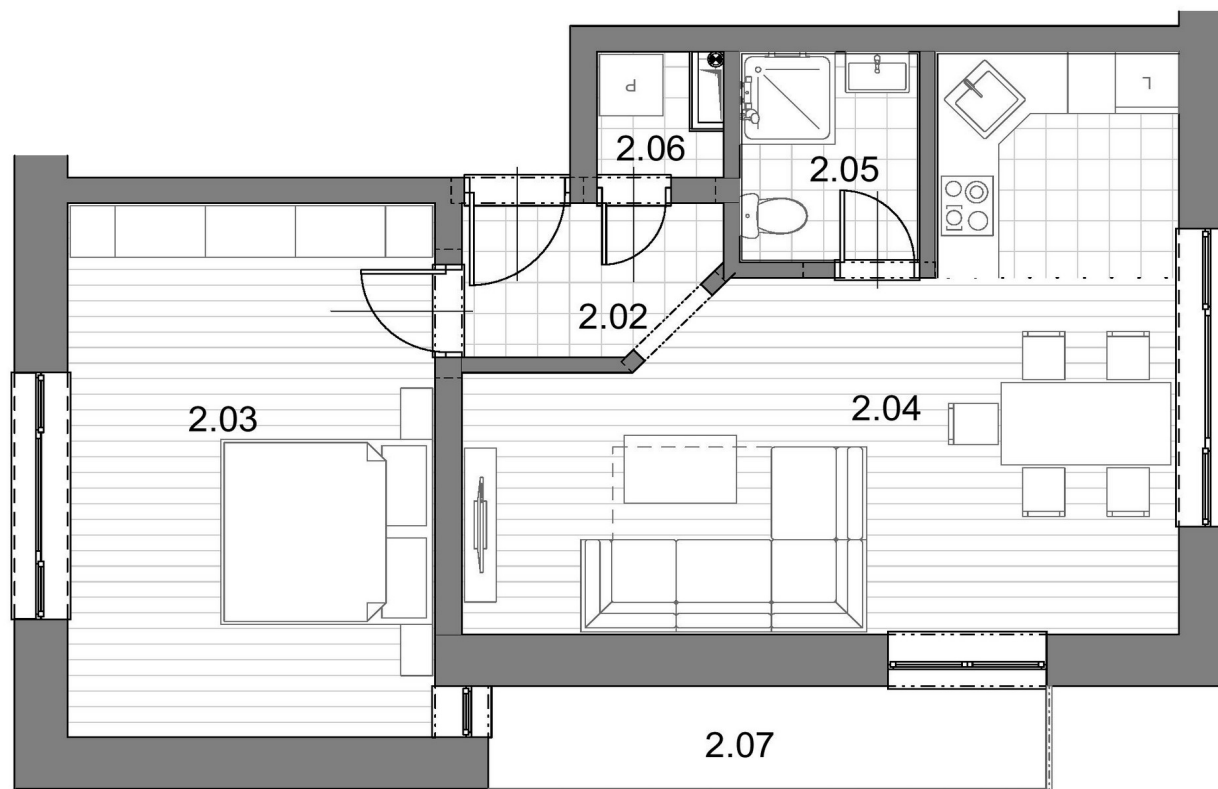


BYTOVÁ JEDNOTKA **D**



POPIS

| | |
|------|------------------------|
| 2.02 | ZÁDVERIE |
| 2.03 | SPÁLŇA |
| 2.04 | OBYTNÁ IZBA S KUCHYŇOU |
| 2.05 | KÚPEĽŇA S WC |
| 2.06 | KOMORA |
| 2.07 | BALKÓN |
| | CELKOM |

| |
|---------------------|
| 3,28m ² |
| 18,07m ² |
| 26,68m ² |
| 3,48m ² |
| 1,22m ² |
| 5,28m ² |
| 58,01m ² |

| |
|------------------------|
| KERAMICKÁ DLAŽBA |
| LAMINÁTOVÁ PODLAHA |
| KERAM.DLAŽBA/LAM.PODL. |
| KERAMICKÁ DLAŽBA |
| KERAMICKÁ DLAŽBA |
| KERAMICKÁ DLAŽBA |



ZOJOS
tvorba budov a prostredia





